

**seers**

# **Compact height**

EQUIPMENT  
**TEUPEN LEO 23GT BOOM LIFT**

To hire, call us on  
**029 2029 0410**

TEUPEN LEO 23GT

**seers**



### **TEUPEN LEO 23GT**

The LEO23GT is especially suited for jobsites that provide little space and require great working heights. Particularly in seemingly inaccessible spaces, the LEO23GT proves its strengths. The variable and quick multi-position stabilising system, the 180° rotatable basket and the flexible articulated and telescopic boom are ideal for quick and efficient applications.

**Available for Next Day Delivery**

**Hire Machine Only**

**Hire With Operator**

#### **Working Height**

23m

#### **Outreach**

11,20m

#### **Basket Capacity**

200 kg

#### **Machine Weight**

2990 kgs

#### **Minimum Width**

0.98m

#### **Power**

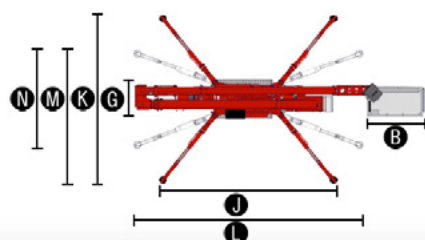
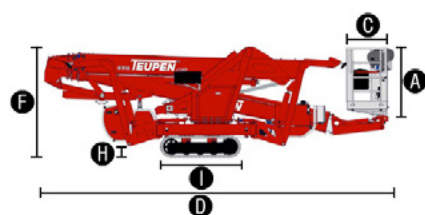
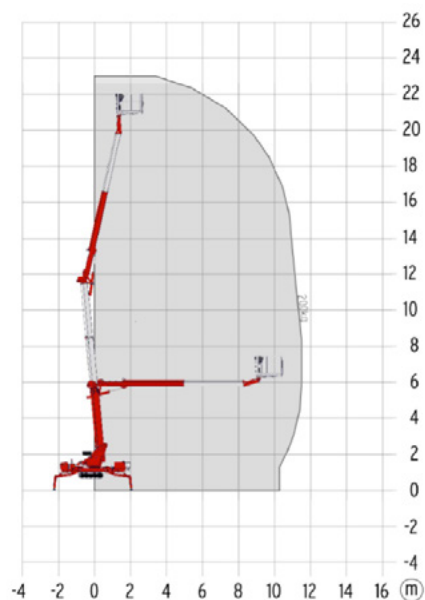
Electric: 230 V, 12,9 A, 2,2 kW  
Diesel: Kubota Z 602 (10,8 kW/14,5 hp)

**Hire online**



**Technical data: Teupen LEO23GT**

Working height, max.	23,00 m
Horizontal outreach with 200 kg	11,20 m
Up-and-over clearance, max.	11,50 m
Platform height (A)	1,10 m
Platform length (B)	1,42 m
Platform width (C)	0,70 m
Length, overall (D)	6,20 m
Length without basket (E)	-
Height, travelling position (F)	1,97 m
Width, min. (G)	0,98 m
Ground clearance, max. (H)	0,40 m
Track (L x W) (I)	1,45 m x 0,20 m
Length outrigger footprint standard (J)	4,53 m
Width outrigger footprint standard (K)	4,33 m
Length footprint one side narrow (L)	5,98 m
Width footprint one side narrow (M)	3,42 m
Width footprint both sides narrow (N)	2,58 m
Outrigger plate $\phi$	0,18 m
<b>Productivity</b>	
Basket capacity	200 kg
Movable Jib	-
Basket rotation	180°
To be jacked up on ground slope of	16,7°/30,0 %
Height and width track adjustment	23/45 cm
Gradeability, max.	16,7°/30,0 %
Slope angle	15,5°/27,0 %
Travel speed	1,3 km/h
Turret rotation	360°
<b>Weight</b>	
Total weight	2990 kg
Live load in travelling position	4,02 kN/m <sup>2</sup>
Live load in working position	1,78 kN/m <sup>2</sup>
Point load per outrigger plate, max.	22,4 kN
<b>Power</b>	
Standard power sources (Electric and combustion engine)	1) Electric: EU: 230 V, 12,9 A, 2,2 kW US: 115 V, 19,3 A, 1,6 kW 2) Diesel: Kubota Z 602 (10,8 kW/14,5 hp)
Optional power sources	1) Electric: 400 V 2) Battery: 48 V
Fuel tank capacity Diesel engine	12,0 l


[Hire online](#)


## TEUPEN LEO 23GT

**Features**

- Powerful track drive with hydraulic braking system
- Precise maneuvering over sensitive electrohydraulic cable remote control
- Rubber tracks with specially arranged profile providing optimum grip
- White, non-marking rubber tracks
- Height- and width adjustable track chassis

**Stabilisation**

- Fully-hydraulic, automatic levelling system with outrigger/stabiliser setup monitoring
- Variable stabiliser/outrigger system with one-side or both-sides narrow setup option
- Wear resistant, anti-friction PVC outrigger/stabiliser feet

**Boom System**

- Telescoping upper- and lower booms, trapezium-shaped with Teflon sliding blocks
- All functions are available from one control panel
- Electric-proportional controls with intuitive operator guidance
- Robust, lockable control panel with integrated operation function
- Self-levelling platform with fully-hydraulic levelling system
- Corner-mounted, 180° turnable basket for extra flexibility
- Boom rotation via high-performance slew ring, worm gear and hydraulic motor
- Resting support system prevents incorrect positioning of boom in transport bracket

**Power Sources**

- 230 V electric motor (EU), 115 V electric motor (US)
- Start-Stop switch of combustion engine in the basket
- Kubota diesel engine Z602 with electronically regulated engine control

**Productivity, Safety, Quality**

- 230 V (EU), 115 V (US) power outlet in the basket
- Ergonomically shaped basket with eyelets for safety belts and tool tray
- Lockable storage box for cable remote control
- High-quality paint in RAL 3020 (red)
- Hydraulic emergency lowering over hand pump
- Cables and hoses are safely routed through the boom structure
- Biodegradable hydraulic oil
- Lock valves - hydraulic return valves directly on all hydraulic cylinders
- Relief valves protecting the hydraulic system from too high pressures
- Protective covers for oil-tank, emergency controls and connecting cables and hoses
- Protective covers for electric housing, ground control panel and telescopic cylinder
- Easily removable covers for optimal accessibility
- Hour meter
- Complete second control box on the chassis and error analysis with display
- Fuzzy IV control technology

**Options**

- Custom paintwork, one colour, according to RAL scheme (except metallic coatings, signal- or special colors)
- Custom paintwork, two colours, according to RAL scheme (except metallic coatings, signal- or special colors)
- Hydraulically height- und width-adjustable track chassis instead of the mechanically height- and width-adjustable track chassis
- 400 V electric drive instead of 230 V (115 V (US)) electric drive

To hire, call us on

**029 2029 0410**

- Electric emergency lowering (12 kg/24 lbs additional weight). This option can not be combined with the battery drive
- Battery drive 28 V\*\* instead of Diesel engine. This option can not be combined with the electric emergency lowering

- 2 headlights on engine unit

\*\* When using the Low trailer is this option not possible to keep total weight below the permissible gross laden weight of 3.5t.

**Accessories**

- Outrigger/Stabiliser pad (450 x 400 x 40 mm/1 ft 5 in x 1 ft 4 in x 1½ in)
- Lockable storage frame for outrigger/stabiliser pads (additional weight: 4 kg/9 lbs)
- 4 outrigger/sliding pads (650 x 220 x 60 mm/2 ft 2 in x 9 in x 2⅓ in)
- Track mat (2000 x 800 x 15 mm/6 ft 6 in x 3 ft 3 in x ½ in)
- Safety harness
- 2 protective track covers, made of high-quality polypropylene fabric
- Tree package consisting of:
  - Protective cover hydraulic tank
  - Protective cover ground control panel
  - Covers on piston rod (outrigger/stabiliser) cylinders
- 4 covers on piston rod (outrigger/stabiliser) cylinders (additional weight: 10 kg/22 lbs)

**Trailers**

- Tandem Low Platform trailer (aluminium) including 4 tension belts (length 3,50 m/11 ft 6 in) Permissible total weight: 3500 kg/7,716 lbs  
Tandem rubber-sprung axle: 3500 kg/7,716 lbs  
Net weight: approx. 430 kg/948 lbs  
Wheels 155/70/R12 ET20, Lighting fitting according to EU directives

**Hire online**